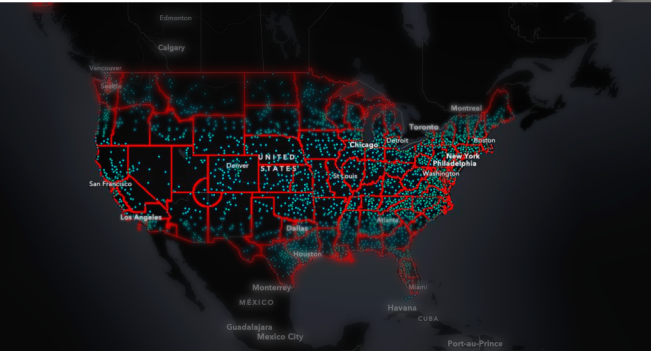




The General Convention Office Launches New Demographic Tool

<https://www.generalconvention.org/research-and-statistics/know-your-neighborhood>

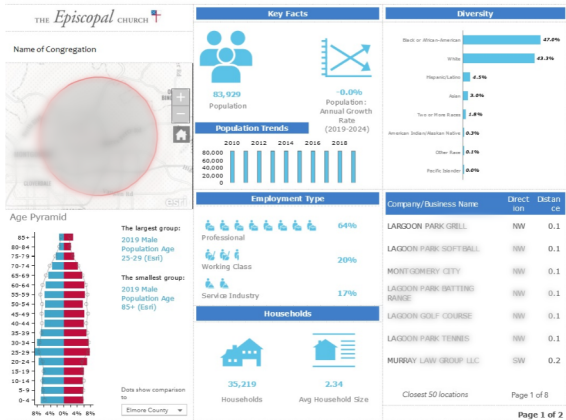


The Stories Data Tells, from Your Neighborhood

The information collected by the General Convention Office through Parochial and Diocesan Reports tells us a lot about who we are, and combined with demographic information, it can also be a tremendous tool as we live into the current realities of following Jesus as Episcopalians.

Do you know your neighborhood?
What data is available?
What story does your data tell?

The General Convention Office has contracted with Datastory Consulting to create a web-based, interactive tool to map our data. Datastory will be a familiar organization and tool to many individuals and dioceses in The Episcopal Church who have worked with New Episcopal Communities or with FaithX Consulting.



Explore Neighborhood

with Demographic Data

“Explore Neighborhood” opens an interactive PDF that provides basic demographic data about the neighborhood within a 15-minute driving radius of a parish. Each box has clickable data.

Users who want to know more about the age breakdown or the generational “segments,” for instance, simply click on that box to dive into more information. The second page of the PDF also provides a link to additional consulting services to help Episcopal communities use and better understand their data.

Explore Trends with Parochial Report Data

In the trends area, a user can access graphs of the past 10 years of data for a parish, a grouping of parishes, a diocese, or a group of dioceses. The toggle buttons in the upper left enable users to search for parishes that have similar sized membership, pledge & plate, or attendance. The graph at the bottom will initially show membership. Clicking on tabs will show additional graphs of pledge & plate, and attendance.

With just a few clicks away, you now have access to data for one or more congregations. Review the information at your fingertips and see what story your data tells you. If corrections need to be made, let us know.

